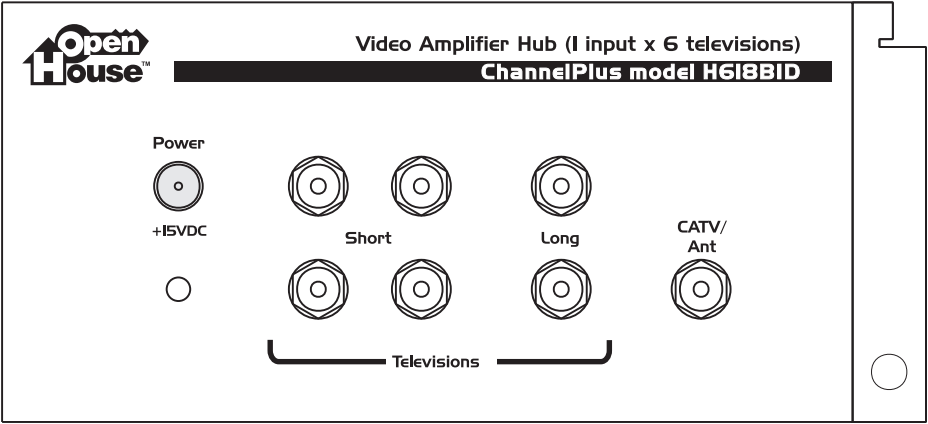
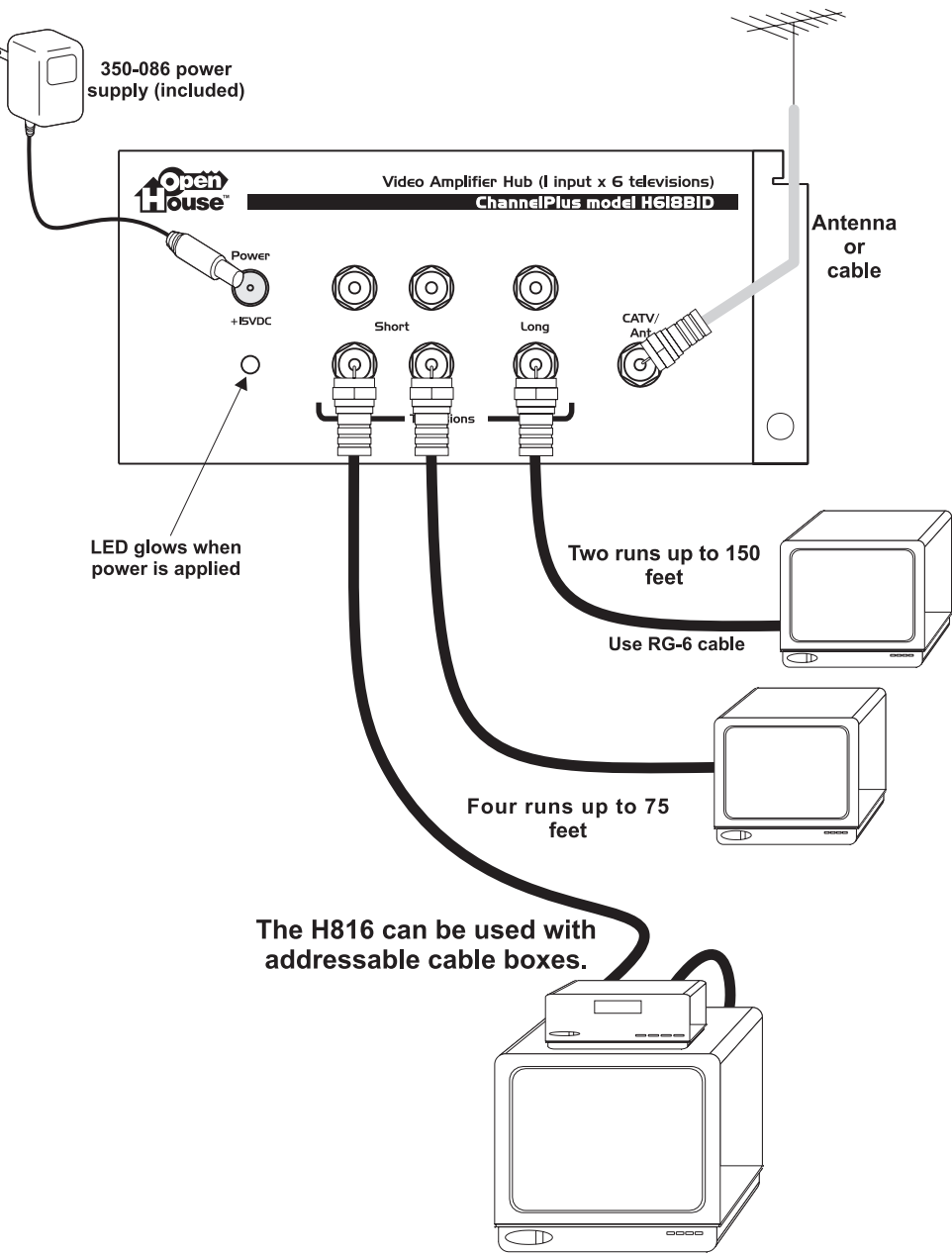


ChannelPlus Video Amplifier Hub

The H816BID video amplifier hub distributes CATV or antenna signals to 6 TVs. The H816BID has four short runs and two long runs for maximum flexibility. The H816BID has a broadband 54-806MHz amplifier and a 5-42MHz reverse channel which is compatible with pay-per-view, interactive cable and cable modems.

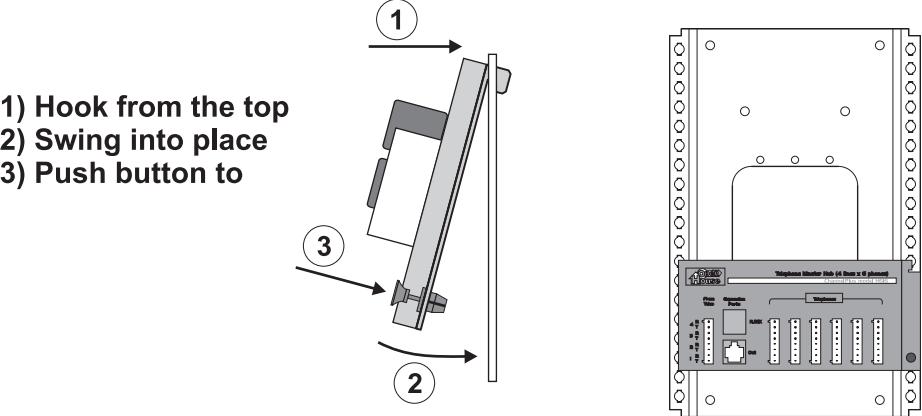


Typical Installation

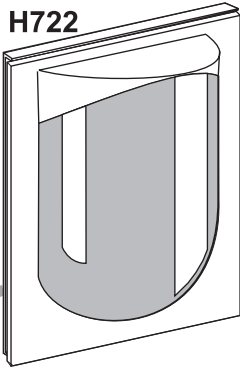


The H816BID video amplifier hub work like a zero-loss splitter. The signals you put on the antenna/CATV input will appear on the outputs with about 1dB of gain for short outputs and about 4dB of gain for long outputs.

OpenHouse™ modules attach from the top

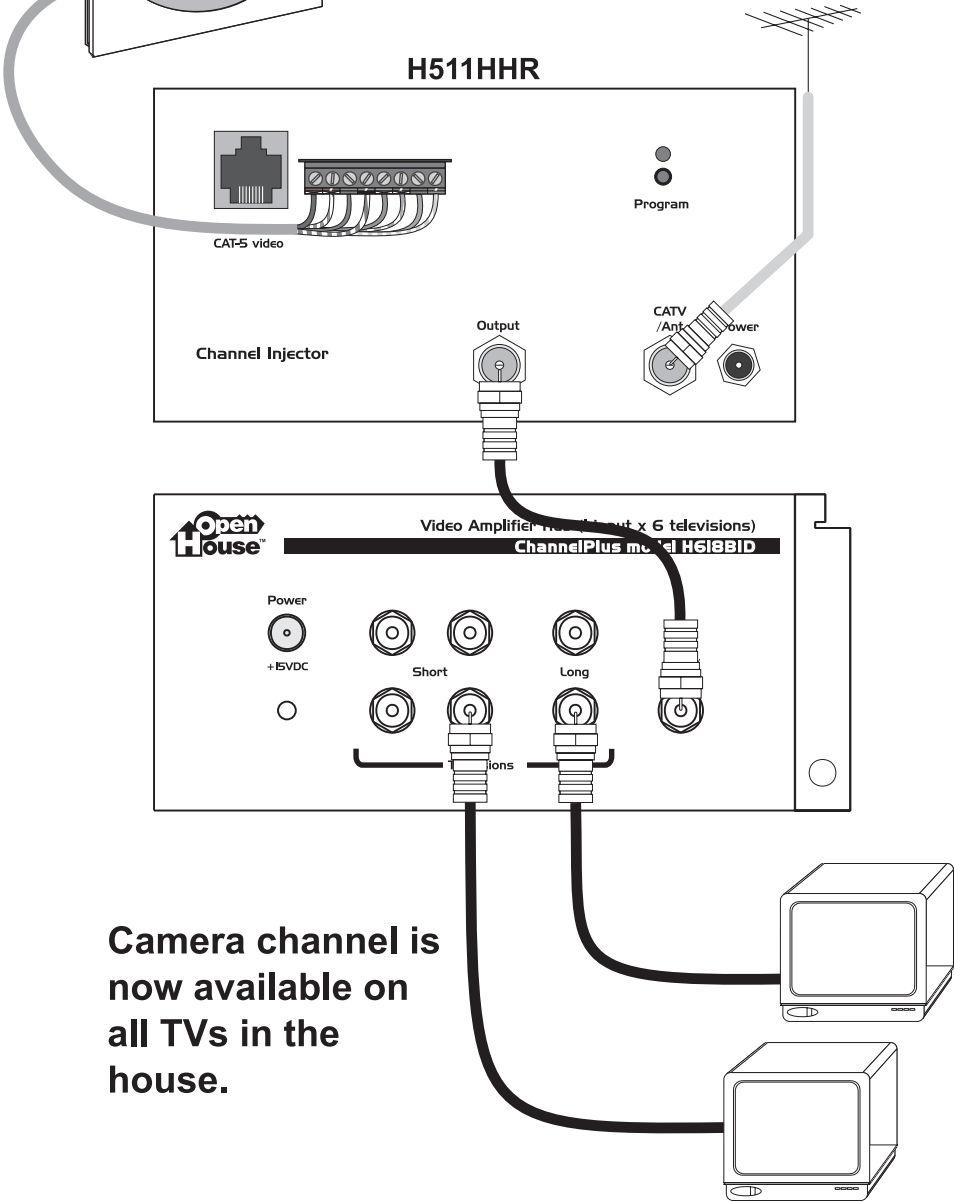


H722



Add a front door camera

This example shows how to use an H511HHR and H722 to add a camera channel to the H816BID system. The H511 adds the camera channel to the existing off-air channels and the H816BID distributes this to all outputs.

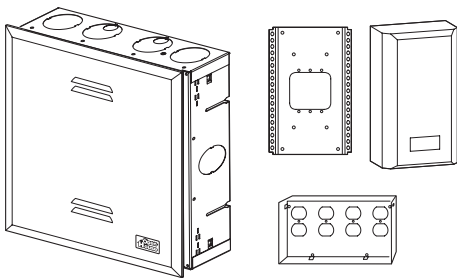


Specifications: typical @ 25°C ± 5° C		
Output run distance:	Long 150 feet	Short 75 feet
Gain:		
CATV/Ant input to TV output	4dB	1dB
TV output to CATV/Ant input (5-42MHZ reverse channel)	-8dB	-12dB
Bandwidth		
Forward	54-806MHz	
Reverse	5-42MHz	
Max CATV/Antenna input (64 channels)	20dBmV	
Power supply (370-086 included)	15 VDC @ 300mA	



Compatible

ChannelPlus Enclosures, Modules, Accessories & Wall Plates

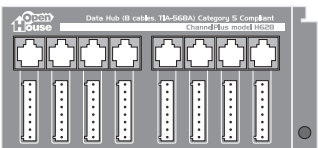
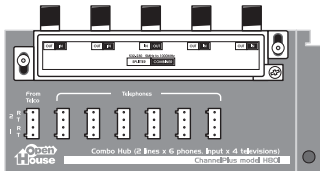


Service center enclosures

A full line of OpenHouse compatible enclosures, from simple, inexpensive mounting plates to high capacity in-wall cabinets. AC outlets can be mounted inside the cabinets using a UL listed accessory.

Starter systems

RF splitters and telephone punch downs. When it is time to upgrade, just snap this module out and replace with one of more of the more sophisticated units.

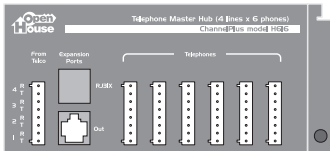


Data hubs

Termination blocks for the CAT-5 cables, Ethernet hubs. Bring the Internet to any room in the home. Or create a home data network.

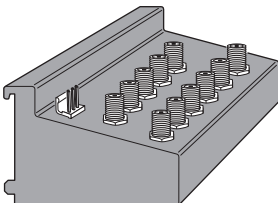
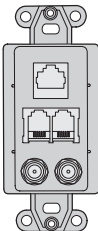
Telephone hubs

Connections for 1-4 phone lines to every room. Starter hub adds RJ-31X jack for security system dialer.



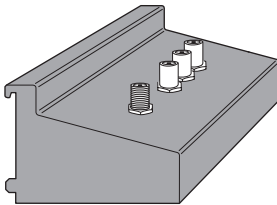
Wall plates

Wall plate systems for all rooms. The typical room gets TV and telephone. The Home office wall plate adds data ports. The media center wall plate adds satellite feeds.



Coax panels

Distribute antenna or cable TV to every room of the house. Some models include bi-directional amplifiers for interactive cable systems. Some models include modulator inputs and IR engines.



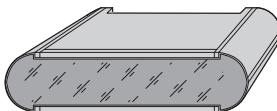
AV modulators (for service center)

Create a new TV channel for a front door camera. Some models feature Cat-5 input connections.



AV modulators (for media center)

Create new TV channels for DVD, VCR, or a satellite receiver. These modulators sit in the media center. Some offer true MTS stereo.



IR Accessories

Control video devices from any room.

New OpenHouse products are added all the time.
Visit our website to learn more: www.openhousesystem.com

	Good	Better	Best
Typical Room	1 Cat-5 1 RG-6	2 Cat-5 1 RG-6	2 Cat-5 2 RG-6
Media Center	1 Cat-5 3 RG-6	2 Cat-5 3 RG-6	3 Cat-5 3 RG-6
Home Office	1 Cat-5 2 RG-6	2 Cat-5 2 RG-6	3 Cat-5 3 RG-6

Good ...
Typical room - phone, TV
Media center - phone, satellite receiver, AV modulators
Home office - phone, TV, cable modem

Better ...

Typical room - phone, TV, ethernet
Media center - phone, TV, ethernet, satellite receiver, AV modulators
Home office - phone, TV, ethernet, cable modem

Best ...

Typical room - phone, TV, ethernet, satellite receiver
Media center - phone, TV, ethernet, satellite receiver, AV modulators, hi-speed data
Home office - phone, TV, ethernet, satellite receiver, cable modem, hi-speed data

LIMITED WARRANTY STATEMENT

Linear LLC warrants this product to be free from defects in material and workmanship for 2 years. The time period will be measured using the date code labeled on the product. Linear LLC is not responsible for damage to the product resulting from the buyer's improper handling, stocking or warehousing of the product. Any implied warranty arising from the sale of the product including implied warranties of merchantability and fitness for purpose are limited. Linear LLC shall not be responsible for any losses, damages or expenses, whether direct, consequential, or incidental arising from the use or the inability to use the product. Some states and countries do not allow limitations on how long an implied warranty lasts or the exclusion or limitation or incidental or consequential damages, so the above exclusions may not apply. The Linear LLC warranty gives specific legal rights in addition to other rights, which may exist and vary from state to state and country to country.

The warranty is limited to repair or replacement of products returned, freight prepaid, to Linear LLC, there is NO PROVISION FOR LABOR COST OR OTHER REIMBURSEMENTS OF ANY KIND.

- Failures due to product abuse, such as negligence, improper use, and electrical surge including damage from lightning, water damage or other damage due to natural disasters are not covered by the warranty. The most common form of product abuse is surge damage caused by lightning.
- The warranty shall also be voided by any tampering with the date code, labels or other markings on the product.
- Products that are damaged in transit to Linear LLC due to improper packaging or by the carrier (shipping company) will not be covered under the warranty. If the product was damaged or lost by the carrier, it is the sender's responsibility to create a claim against the carrier.
- The user is responsible for all labor costs associated with removing, reinstalling and returning the product to Linear LLC.

Linear LLC, at its option, will repair or replace the defective product. Replacements will be made from B-Stock, if an exact replacement is not available, Linear LLC, at its option, will select the nearest equivalent product. The user is responsible for freight charges to Linear LLC. Linear LLC will return warranted repaired or replacements by UPS Ground or an equivalent service. A customer may pay the additional costs for second-day or next-day service.

All products returned for warranty service require a Return Product Authorization Number (RPA#). Contact Linear Technical Services at 1-800-421-1587 for an RPA# and other important details.